

GARAGE

23'-0"

6'-0"

WINDOW OVERHANG

27'-0"

23 3/4"

23 3/4"

23 3/4"

Steve Bark

821 Haley St.

11'-6"

28'-6"

80 sf
x 2
160 sf
2 story

FLOOR PLAN

314 sf

CENTER
4'-0"

SUPPORT BEAM FOR LOFT
(5 1/4" x 14" x 17')

23 3/4"

47 3/4"

47 3/4"

23 3/4"

17'-0"

8"

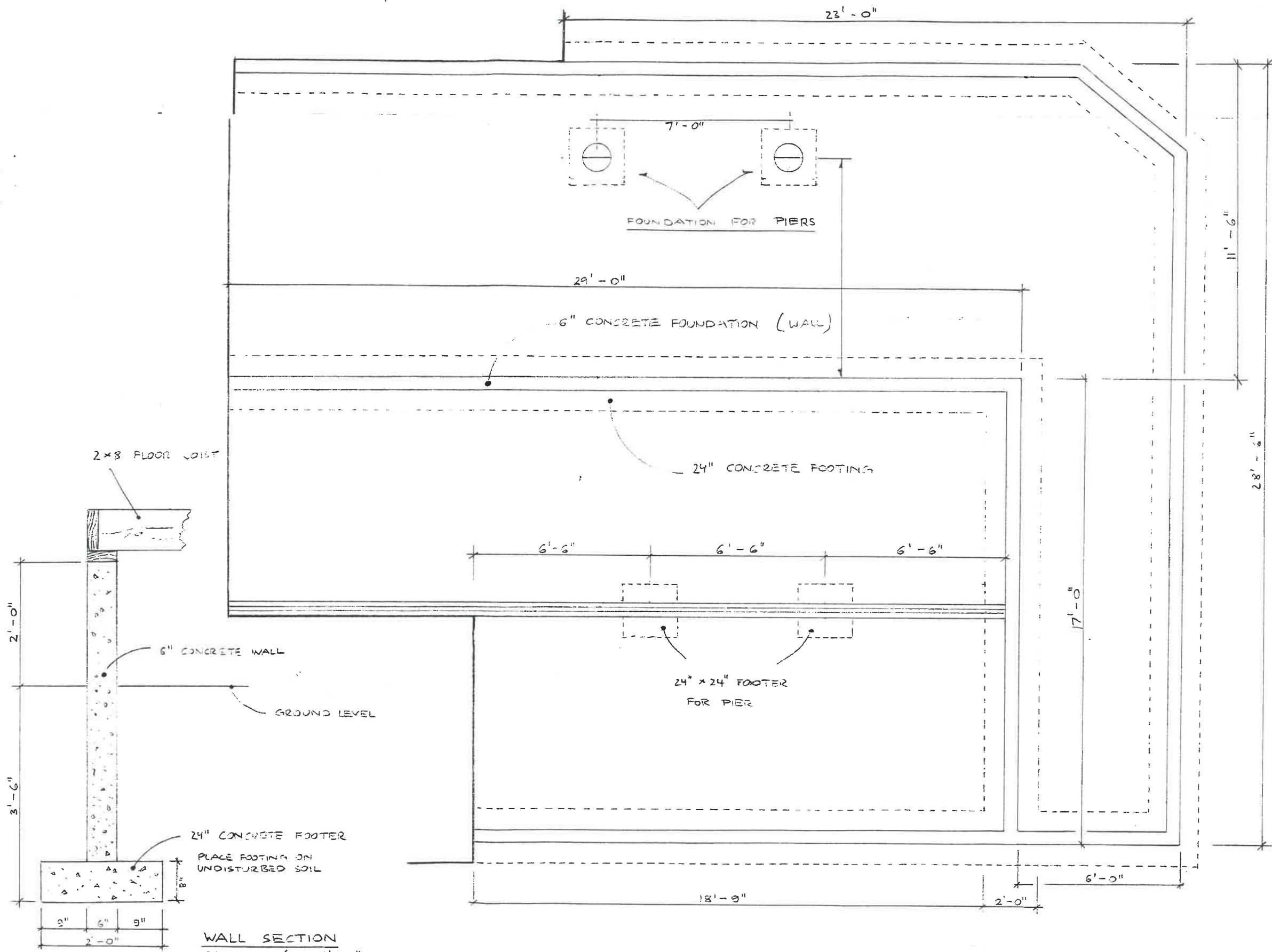
23 3/4"

23 3/4"

23 3/4"

23 3/4"

20'-0"



7'-0"
FOUNDATION FOR PIERS

29'-0"
6" CONCRETE FOUNDATION (WALL)

24" CONCRETE FOOTING

24" x 24" FOOTER FOR PIER

2x8 FLOOR JOIST

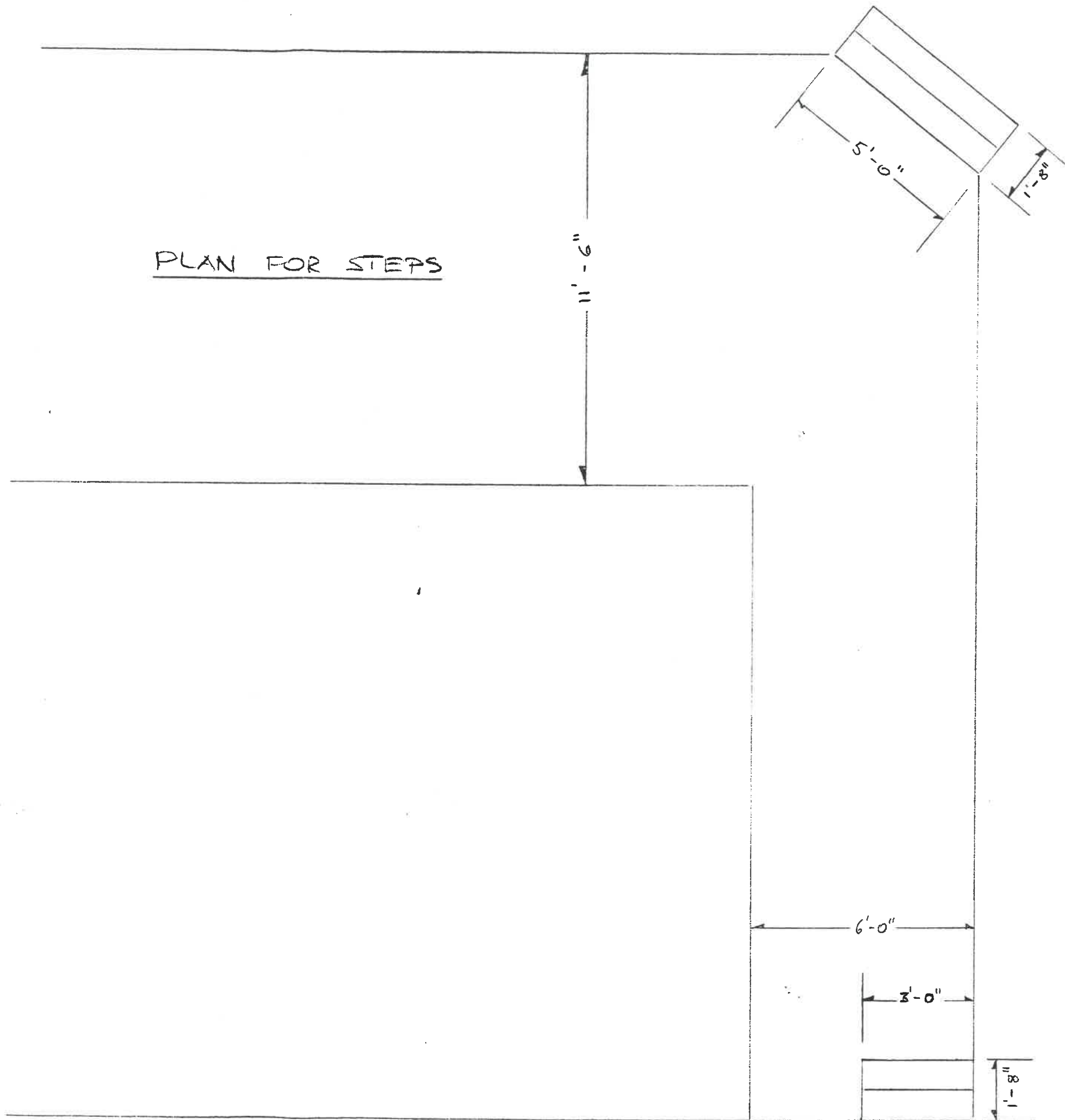
6" CONCRETE WALL

GROUND LEVEL

24" CONCRETE FOOTER

PLACE FOOTING ON UNDISTURBED SOIL

WALL SECTION
SCALE: 3/4" = 1'-0"



PLAN FOR STEPS

